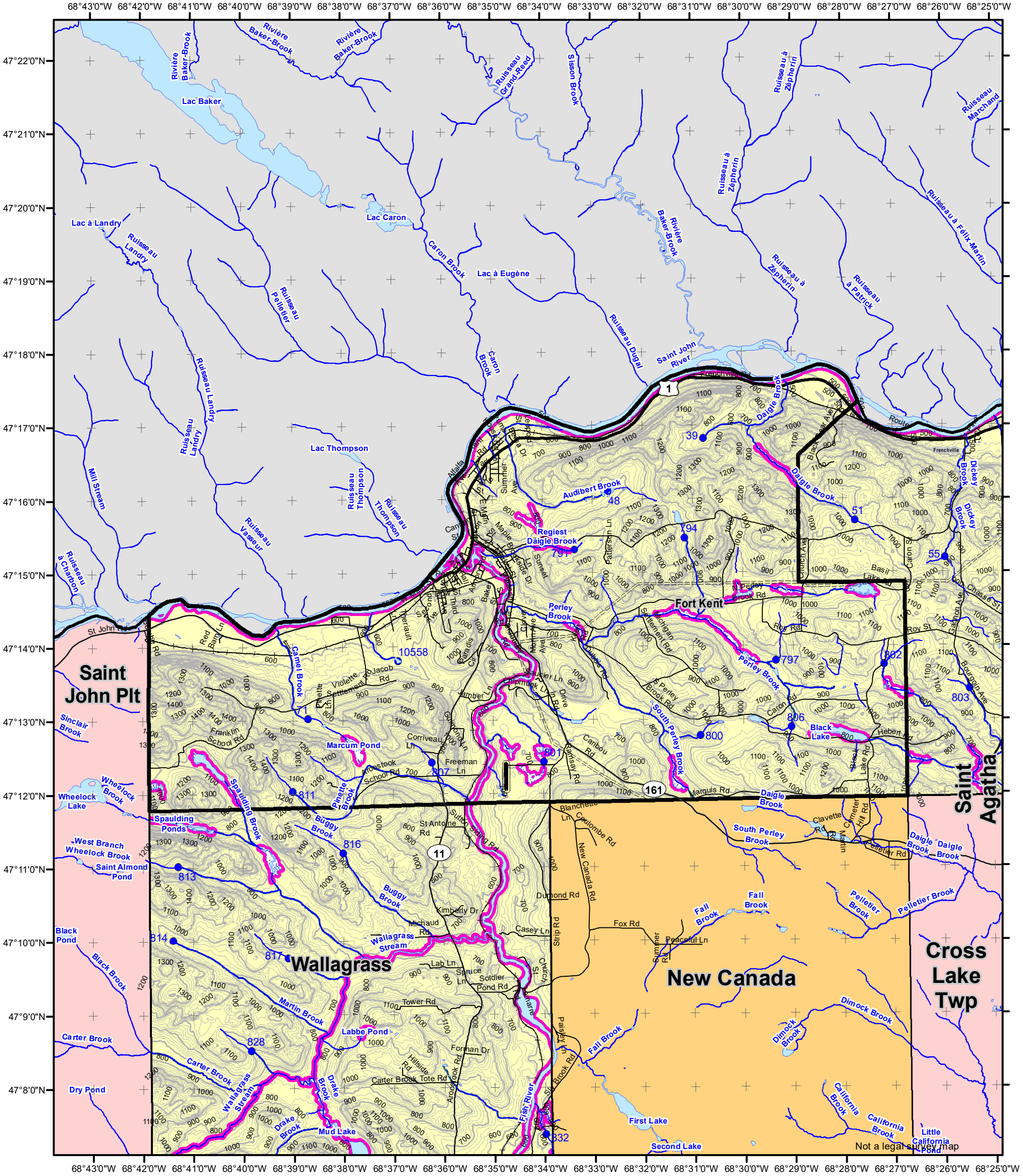


Statewide Standards for Timber Harvesting in the Shoreland Area* Map



This map is ADVISORY, for planning purposes only. Actual ground conditions and water body locations determine where and how MFS timber harvesting rules apply. Contact the MFS for additional information/assistance from a MFS Forester.

Forest Operation Notification & Shoreland Area* Map **Fort Kent**

Adoption Date
8/20/2009

LO Last Name _____
LO First Name _____
Prepared By _____
FONS # _____
Date _____

Wetlands

	Non-forested Wetlands Greater Than 10 acres (Lacustrine, Palustrine)
	Emergent or Marine Wetland

Department of Agriculture, Conservation and Forestry
Maine Forest Service

Maine Forest Service

For additional information, please contact the MFS at:
1-207-287-2791 or 1-800-367-0223 (in-State)

Email us at: forestinfo@maine.gov
or on the web at: www.maineforestservice.gov

Drainage Points

	1234 300 Acre Drainage Point (start of the 75 ft buffer) 1234 - ID Number (location info)
	56 25 Square Mile Drainage Point (start of the 250 ft buffer) 56 ID Number (location info)

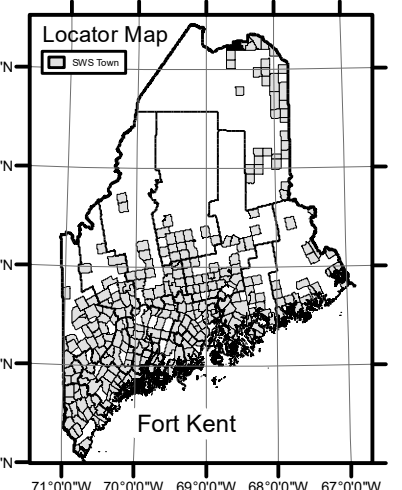
Habitat

	Essential Wildlife Habitat (Least Tern, Roseate Tern, Piping Plover)
--	--

Buffers

	250 Foot Buffer Zones Great Ponds Non-forested Wetlands greater than 10 acres Rivers below the 25 square mile drainage point Coastal Wetlands Tidal Waters Essential Wildlife Habitat (Least Tern, Roseate Tern, Piping Plover)
	75 Foot Buffer Zones - Streams between the 300 acre drainage point and the 25 square mile drainage point
	Shoreline Integrity - Streams draining less than 300 acres, ponds and Non-forested Wetlands greater than 0.1 acres and less than 10 acres

Shoreline Integrity also applies to UNMAPPED streams & wetlands.



*See MFS Rule - Chapter 21 for additional information.

